

# A2 WOODLAND

3 Bedroom  
2 Bathroom  
1 Powder Room  
Serene Forest Backdrop & Courtyard

|              |                   |
|--------------|-------------------|
| Interior     | 1,371 sqft        |
| Front Yard   | 112 sqft          |
| Back Patio   | 140 sqft          |
| Storage      | 44 sqft           |
| <b>Total</b> | <b>1,667 sqft</b> |

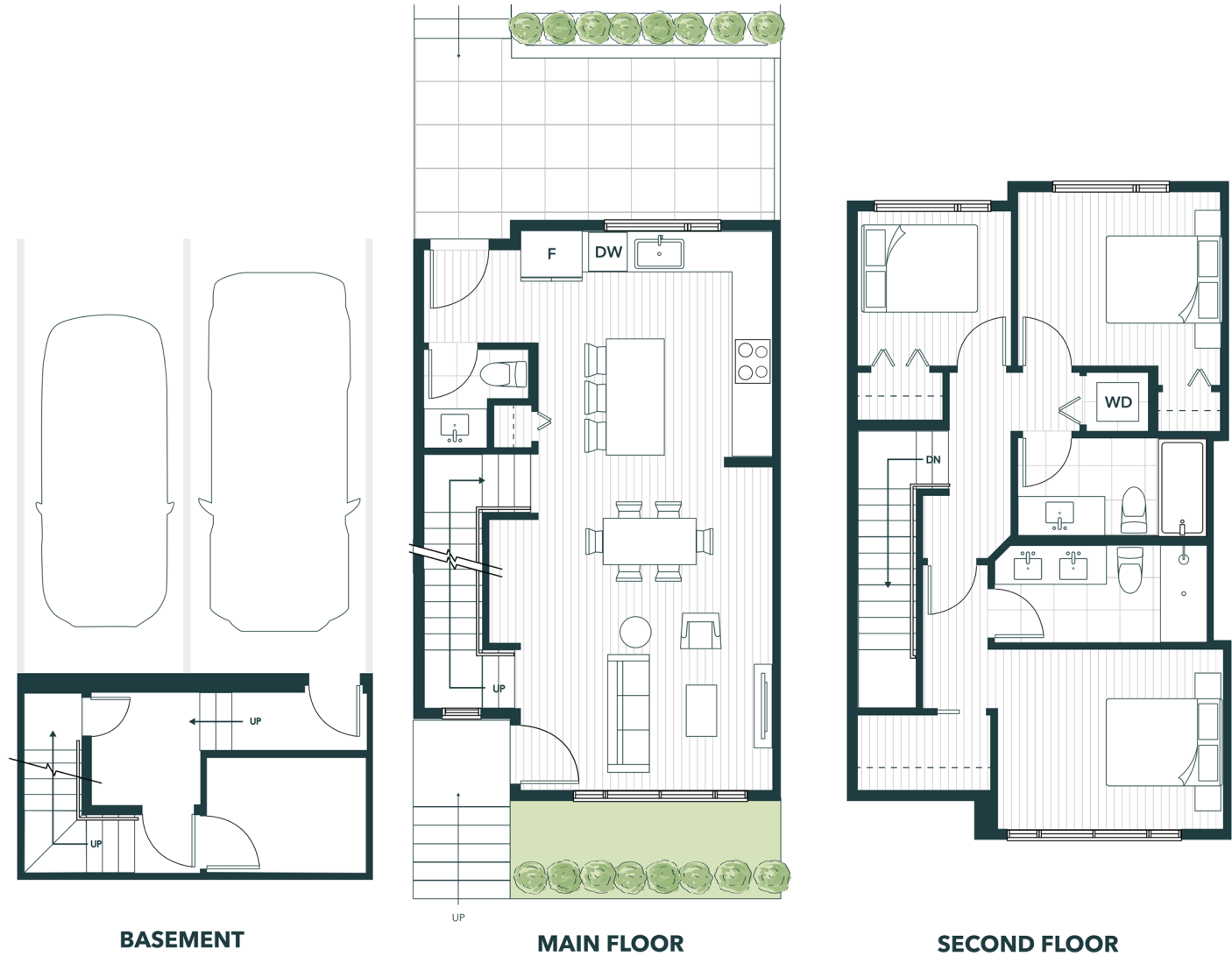


ELISA AT SUNNYSIDE PARK

Developed by Hive Development  
Designed by Aplin & Martin  
Consultants Ltd.

Exclusive Marketing Designs & Sales:  
Henry Realty - Henry Ma PREC\*

Home Gallery  
778 537 1989  
henry@elisaliving.ca  
elisaliving.ca



**BASEMENT**

**MAIN FLOOR**

**SECOND FLOOR**

Dimensions, sizes, specifications, layouts, materials, etc. are approximate only and subject to change without notice. Images shown are artistic conceptual renderings only. The developer reserves the right to make modifications to, without limitation, the building design, specifications, features, floorplans, layouts and size of development. This is not an offering for sale. E.&O.E.