

A3 WOODLAND

3 Bedroom
2 Bathroom
1 Powder Room
Serene Forest Backdrop & Courtyard

Interior	1,339 sqft
Front Yard	115 sqft
Back Patio	145 sqft
Storage	44 sqft
Total	1,643 sqft

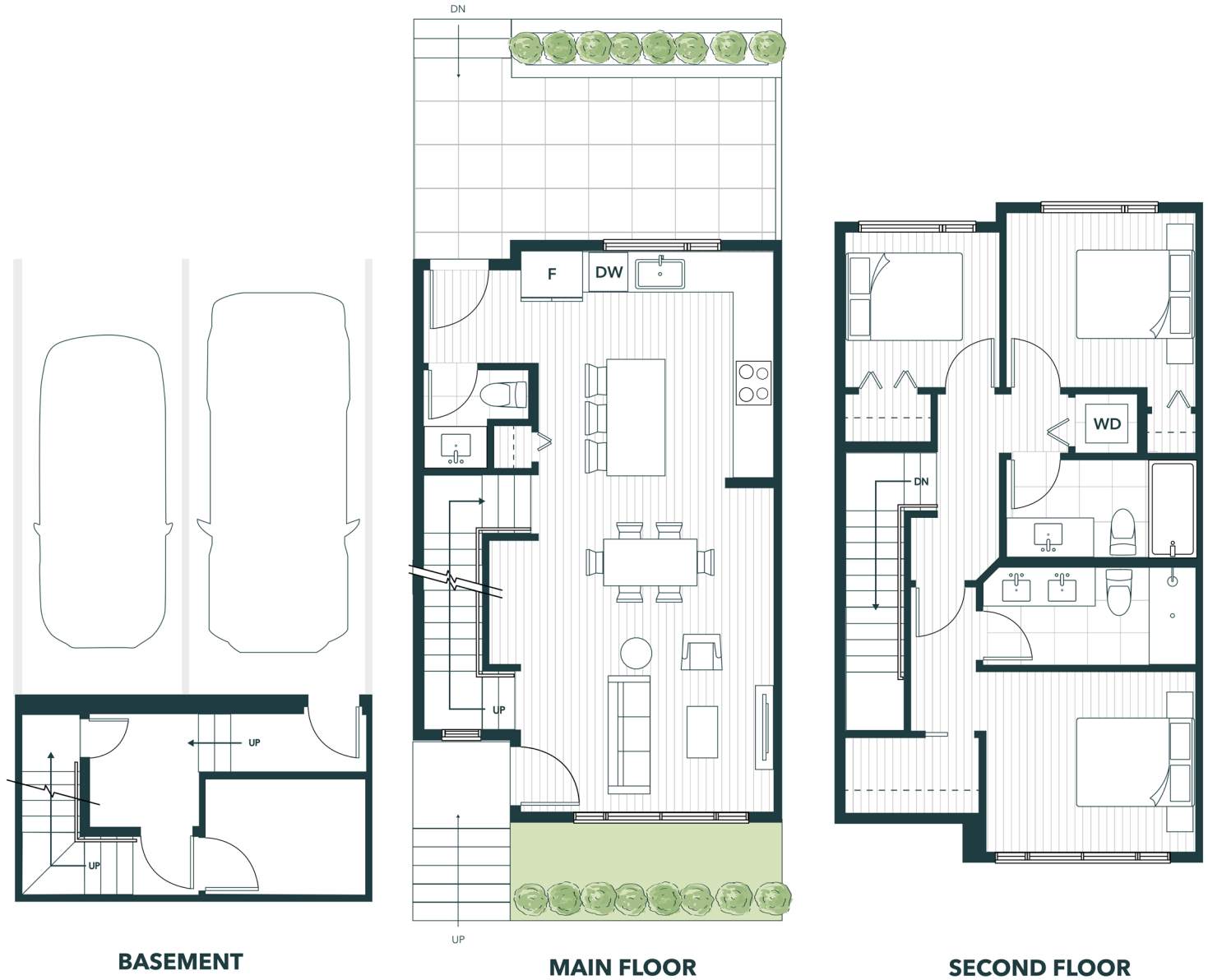


ELISA AT SUNNYSIDE PARK

Developed by Hive Development
Designed by Aplin & Martin
Consultants Ltd.

Exclusive Marketing Designs & Sales:
Henry Realty - Henry Ma PREC*

Home Gallery
778 537 1989
henry@elisaliving.ca
elisaliving.ca



Mirrored Unit: 19, 20, 21, 22

Dimensions, sizes, specifications, layouts, materials, etc. are approximate only and subject to change without notice. Images shown are artistic conceptual renderings only. The developer reserves the right to make modifications to, without limitation, the building design, specifications, features, floorplans, layouts and size of development. This is not an offering for sale. E.&O.E.